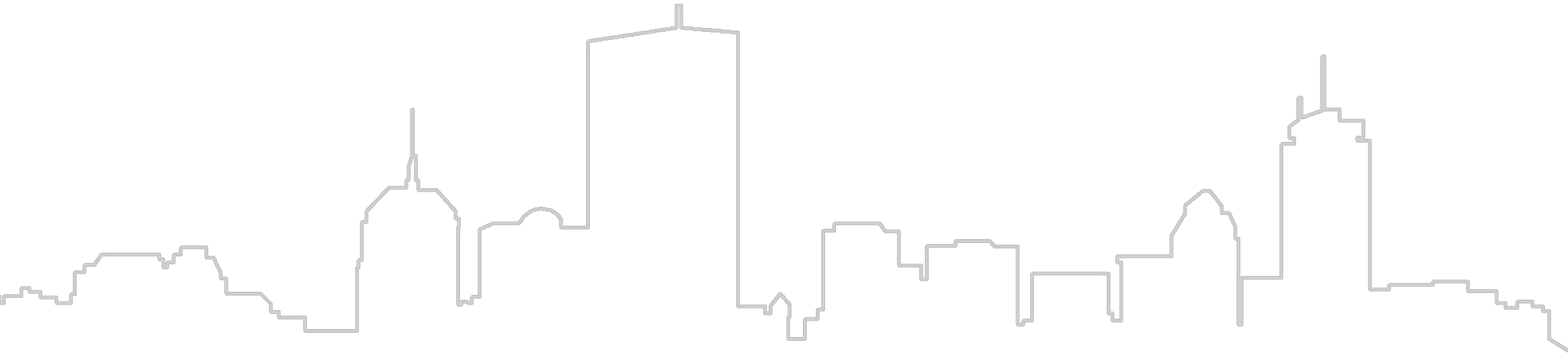


Green Ribbon Cutting

Collaborative Climate Action Planning

May 24, 2023



CONGRATULATIONS!

2022-2023 Collaborative Climate Action Planning Cohort

Emerson
COLLEGE



ZOO
NEW ENGLAND
Franklin Park Zoo ♦ Stone Zoo

HISTORIC[®]
NEW ENGLAND



Sustainability Action Planning at Emerson College

*Presented by Jen Lamy
Associate Director of Sustainability*

Emerson
COLLEGE

Sustainability



About Emerson

- Arts and communication focus, grounded in the liberal arts
- Located downtown in Boston
- About 5,500 total students with about 3,000 undergraduates living on campus
- School of the Arts, School of Communication, Marlboro Institute for Liberal Arts & Interdisciplinary Studies, Office of the Arts
- New College President starting June 1, 2023



History of sustainability at Emerson

1996

Students form Earth Emerson to improve recycling on campus



2007

Emerson signs the Presidents' Carbon Commitment



2009

Emerson publishes its first Climate Action Plan



2013

Emerson hires its first full-time sustainability staff member



2016

Emerson signs on to the resilience portion of the Presidents' Climate Commitment



2022

Emerson begins the development of a new Sustainability Action Plan

2030

Carbon neutrality and resilience target year

EMISSIONS
1 GOAL

RESILIENCE
1 GOAL

EQUITY &
JUSTICE
1 GOAL

WASTE
2 GOALS

CURRICULUM
& RESEARCH
1 GOAL

FINANCE
1 GOAL

OVERALL:

- 6 working groups
- 40 individuals
- 7 goals
- 24 unique strategies

EMISSIONS

Achieve carbon neutrality
by 2030.

RESILIENCE

EQUITY & JUSTICE

WASTE

CURRICULUM

FINANCE

EMISSIONS

Achieve carbon neutrality by 2030.

RESILIENCE

Leverage resources and strengths to ensure that both the College community and its neighbors thrive in the face of climate change.

EQUITY & JUSTICE

WASTE

CURRICULUM

FINANCE

EMISSIONS

Achieve carbon neutrality by 2030.

RESILIENCE

Leverage resources and strengths to ensure that both the College community and its neighbors thrive in the face of climate change.

EQUITY & JUSTICE

Integrate holistic, justice-centered approaches in sustainability actions in a consistent manner that values local and global communities

WASTE

CURRICULUM

FINANCE

EMISSIONS

Achieve carbon neutrality by 2030.

RESILIENCE

Leverage resources and strengths to ensure that both the College community and its neighbors thrive in the face of climate change.

EQUITY & JUSTICE

Integrate holistic, justice-centered approaches in sustainability actions in a consistent manner that values local and global communities

WASTE

Reduce the total waste created on campus by 30 percent.
Increase campus waste diversion rate to 70 percent.

CURRICULUM

FINANCE

EMISSIONS

Achieve carbon neutrality by 2030.

RESILIENCE

Leverage resources and strengths to ensure that both the College community and its neighbors thrive in the face of climate change.

EQUITY & JUSTICE

Integrate holistic, justice-centered approaches in sustainability actions in a consistent manner that values local and global communities

WASTE

Reduce the total waste created on campus by 30 percent.
Increase campus waste diversion rate to 70 percent.

CURRICULUM

Apply areas of academic strength toward contributing to the achievement of the Sustainable Development Goals.

FINANCE

EMISSIONS

Achieve carbon neutrality by 2030.

RESILIENCE

Leverage resources and strengths to ensure that both the College community and its neighbors thrive in the face of climate change.

EQUITY & JUSTICE

Integrate holistic, justice-centered approaches in sustainability actions in a consistent manner that values local and global communities

WASTE

Reduce the total waste created on campus by 30 percent.
Increase campus waste diversion rate to 70 percent.

CURRICULUM

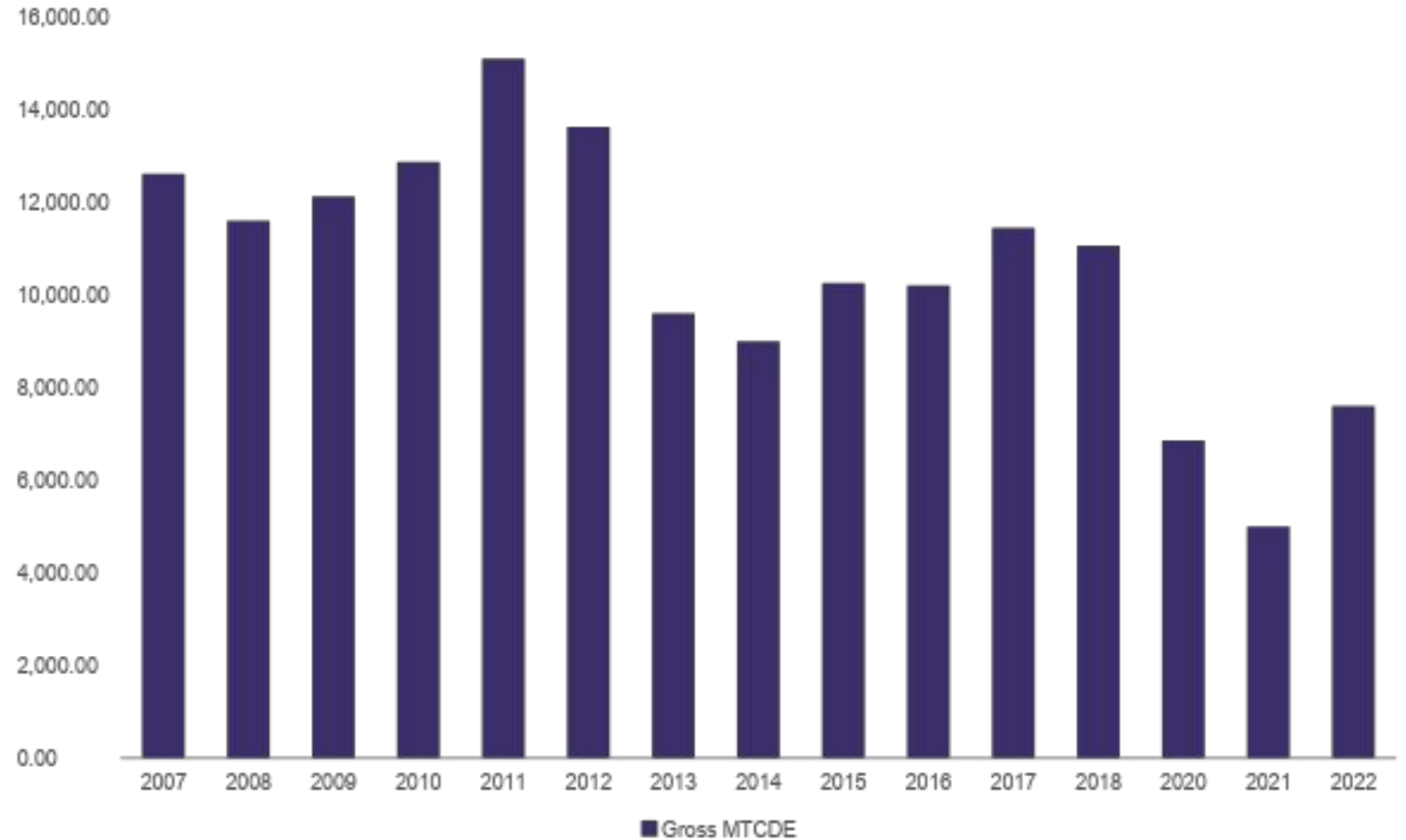
Apply areas of academic strength toward contributing to the achievement of the Sustainable Development Goals.

FINANCE

Ensure investments and purchases reflect an institutional commitment to environmental, social, and economic sustainability.

Next steps at Emerson

- Team drafting a cohesive plan
- Resource identification
- Leadership engagement
- Implementation!





RIVERSIDE BOAT CLUB

CAMBRIDGE, MA

CLIMATE STATEMENT

RBC recognizes that climate change is an emergency that threatens our sport, the lives of our members and all human civilization, and the natural world; and meeting this challenge is both a moral imperative to remedy environmental harms and an opportunity to convert to a just and ecologically sustainable organization and therefore declares that **Reducing Climate Impacts is a core value of the Club.**

MITIGATION GOALS

- Boathouse to be Net Zero by 2025
- Reduce transportation emissions by 50% by 2035

RESILIENCE GOALS

- Ensure safety of members and guests
- Protect physical plant and equipment

COMMUNITY GOALS

- Share goals and plans
- Strengthen bonds

STRATEGIES & ACTIONS

Goal: Boathouse Net Zero by 2025

Strategy: Reduce energy use/heat loss

Install energy-efficient windows



Convert to LED lighting



New doors to porch, low-flow showers



Insulate ceiling and walls

2023

STRATEGIES & ACTIONS

MITIGATION

Insulate ceiling and walls

Before



After



STRATEGIES & ACTIONS

Goal: Boathouse Net Zero by 2025

Strategy: Convert to clean energy

Install solar panels	2024
Replace oil boiler with heat pump	2024
Opt for 100% Green electricity	2025

STRATEGIES & ACTIONS

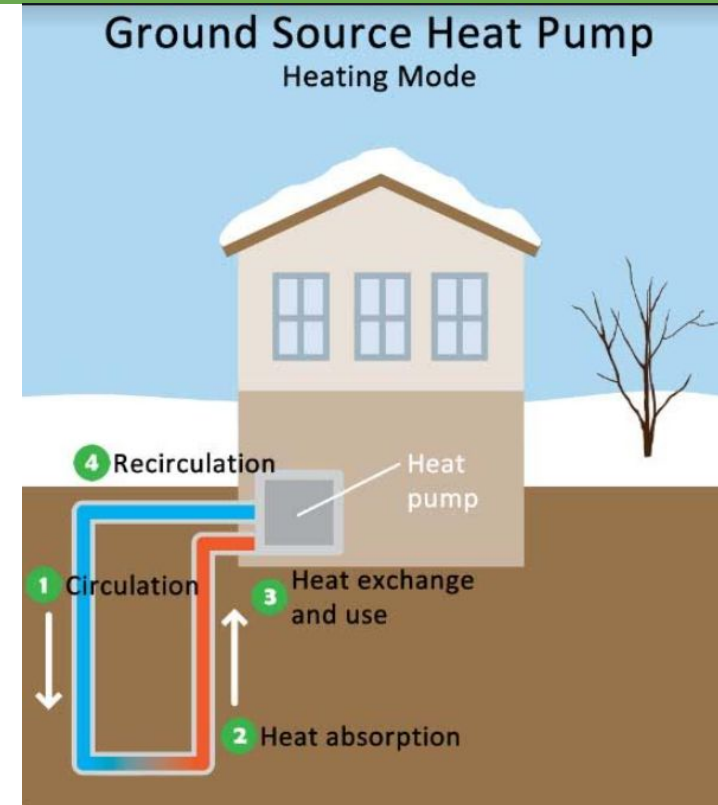
MITIGATION

Install solar panels



STRATEGIES & ACTIONS

Replace oil boiler with heat pump



STRATEGIES & ACTIONS

Goal: Reduce Transportation Emissions
by 50%

Strategy: Electrify

DATE

Rent EV trucks for hauling trailer

u/k

Replace launch motors with electric

u/k

Install EV chargers in parking lot

u/k

STRATEGIES & ACTIONS

Goal: Ensure Safety of Members & Guests

Strategy: Adapt to higher temperatures

Collaborate with CRAB, DCR on management of milfoil, other invasives	2023 & on
Move Cromwell Cup to cooler month	2023
New heat pump can also air condition	2024

STRATEGIES & ACTIONS

Goal: Protect Physical Plant & Equipment

Strategy: Adapt to growing flood risk?

Monitor growing flood risk & respond as necessary	2025 & on
---	--------------



Water Bodies



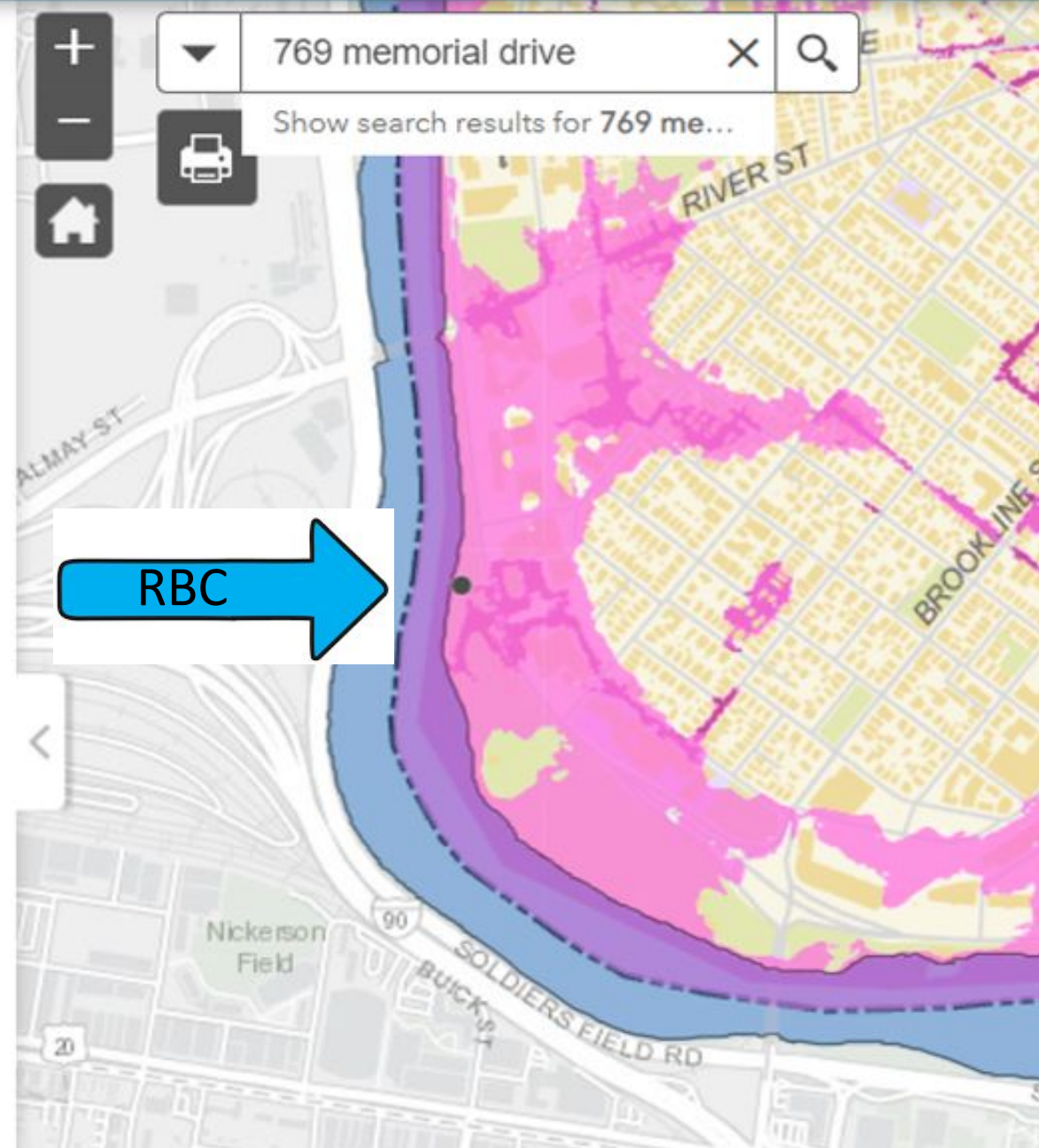
Sea Level Rise / Storm Surge Flooding - 2070 - 10%

2070 - 10% - SLR/SS Flooding Extent



Precipitation Flooding - 2070 - 10%

2070 - 10% - Extent of Flooding



STRATEGIES & ACTIONS

Goals: Share Plan, Strengthen Bonds

Strategy: Communicate & Collaborate

Partner with Simmons and BCH	2023
------------------------------	------

Share RBC Plan with other boat clubs	2023
--------------------------------------	------

Collaborate w/ Magazine Beach Partners	2023
--	------

Discuss Plan with nearby businesses	2024
-------------------------------------	------

Notify Cambridge, elected reps	2024
--------------------------------	------



RBC Climate Action Plan Cash Flow			
	Calendar 2023	Calendar 2024	Calendar 2025
Ceiling and wall insulation	\$ (110.00)		
Ceiling insulation cover	\$ (81.00)		
Eversource/Mass Save insulation rebate		\$ 25.00	
Solar install assuming full 71 panels		\$ (85.00)	
Geothermal heating		\$ (155.00)	
Federal solar credit 30%			\$ 25.50
Federal geothermal credit 30%			\$ 46.50
Mass Save geothermal rebate \$4,500 per ton			\$ 45.00
Expected expense	\$ (191.00)	\$ (215.00)	\$ 117.00
Contingency 15%	\$ (28.65)	\$ (32.25)	\$ 17.55
For budget planning	\$ (219.65)	\$ (247.25)	\$ 134.55



GRC
Collaborative
CAP Process

- ✓ Framework, Timeline
- ✓ Technical Advice
- ✓ Peer Support

Education, Communication and Climate Literacy

Climate Policy

Visitor and Community Engagement

Mitigation

Resilience

Climate Justice

Wildlife Conservation



NEW ENGLAND

Franklin Park Zoo ♦ Stone Zoo

Climate Action



Climate Action Plan

Historic New England

Historic New England

We save and share New England's past to engage and inform present and future generations.



*Artifacts, Archives,
and Stories*



School and Youth Programs



Homes, Farms, and Landscapes



Community Engagement and Leadership

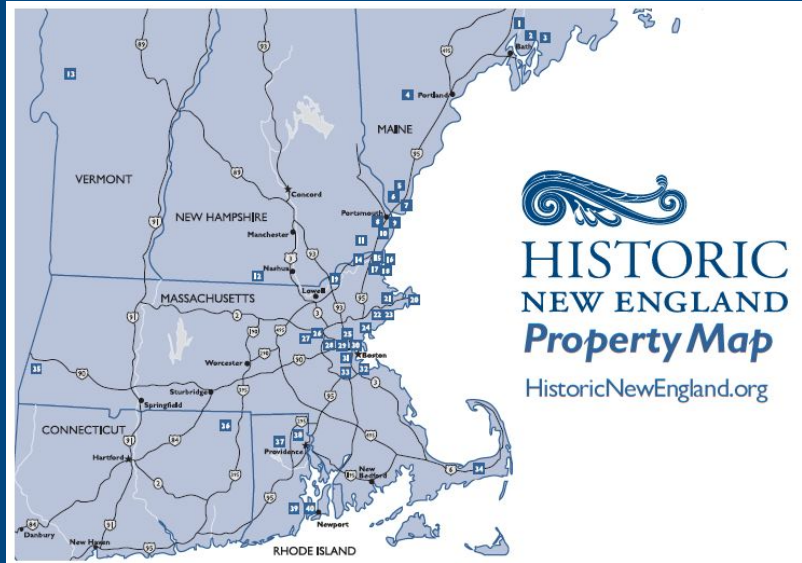
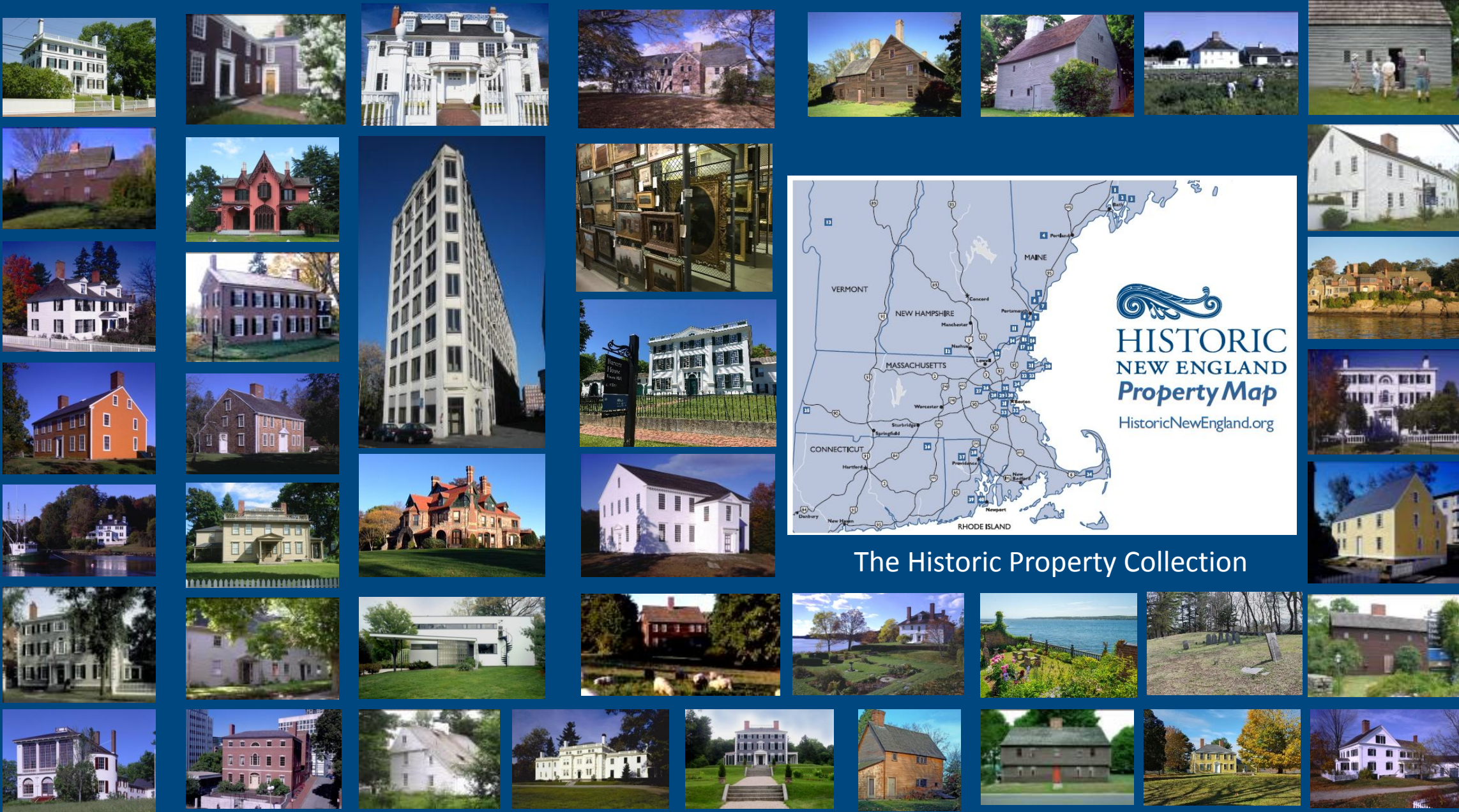


Preservation Services

Historic New England

- 41 historic properties including an eight-story collections storage facility and two cemeteries
- 125,000 objects and 1.5 million items of archival material
- 120 easements held on privately owned historic properties
- 167,657 visitors to the properties in 2022
 - includes guided tours, group tours, exhibitions, public programs, school programs, functions, community meetings, landscapes visitors
- 31,550 students from 168 communities
- More than 280 public programs attended by 56,706 participants
- 8,233 member households. More than ninety percent live in New England, but we have members from forty-three states





The Historic Property Collection

Mitigation Issues

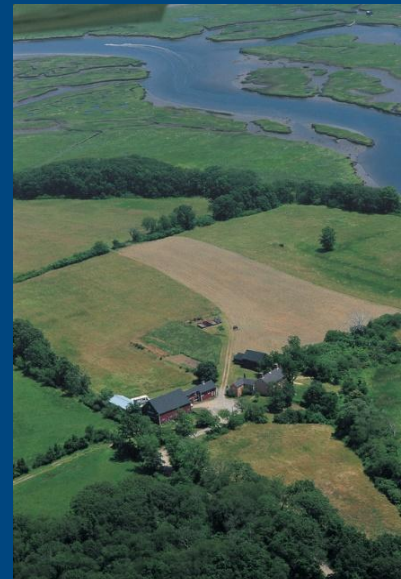
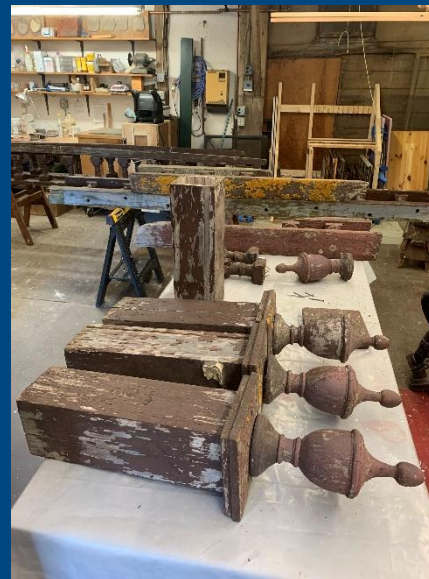
Scope of Buildings and Grounds

167 structures across the properties

- 700,000 sf of interior space
- 4,000 windows
- 72 heating plants
- 108 different utility accounts

1,320 acres of land

- 730 acres of managed landscape
- 590 acres of meadows and woodland



Institutional Commitment to Climate Action

Historic New England is committed to addressing the global climate crisis through actions that will reduce or eliminate our greenhouse gas emissions, promote the resiliency of our properties, engage our communities, and advance climate justice and energy equity.

Draft currently under review

Climate Action Goals (2050)

Historic New England is committed to addressing the global climate crisis through actions that reduce or eliminate greenhouse gas emissions, promote resiliency, engage our communities, and advance climate justice and energy equity by:



Enacting operational shifts that integrate climate action into the day-to-day operations of Historic New England.

Achieving carbon neutrality for all Historic New England sites by 2050, continuously evaluating progress and adjusting actions to achieve success.

Managing our properties to meet our high preservation standards but also adapting those standards to ensure resilience in the face of weather extremes and sea level rise.

Engaging a broad and inclusive public through robust partnerships, programs, and activities that advance climate justice for all.



The Collaborative Climate Action Planning Program will provide you with an opportunity to learn along with and from your peer institutions.”

