

Climate Change Impacts and Projections for the Greater Boston Area

GRCx is an interactive program series from the Boston Green Ribbon Commission designed to accelerate the implementation of the City's Climate Action Plan by providing high-quality, useful content on climate resilience and carbon mitigation to the Boston community.

GRCx





Paul Kirshen
Professor of Climate
Adaptation
UMass Boston School for
the Environment



Ellen Douglas
Associate Dean
Professor of Hydrology
UMass Boston School for
the Environment

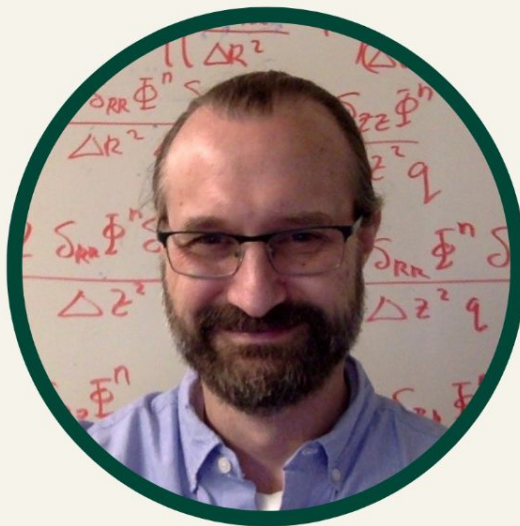


Rob DeConto
Professor
Co-Director
UMass Amherst School of
Earth & Sustainability





Ambarish Karmalkar
Affiliated Investigator
Research Assistant
Professor
UMass Amherst College
of Natural Sciences



Mathew Barlow
Professor
UMass Lowell College of
Sciences



Jayne Knott
Principal and Senior
Scientist
JFK Environmental
Services LLC



Climate Change Impacts and Projections for the Greater Boston Area Report Overview

Paul Kirshen and Ellen Douglas

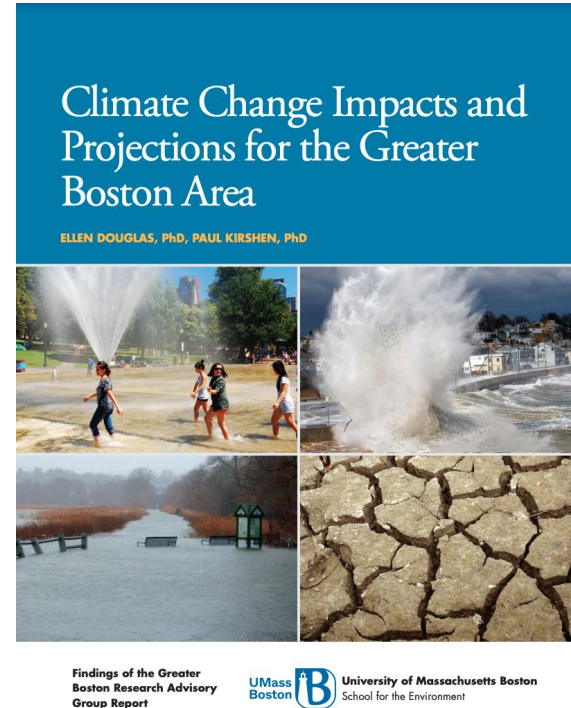
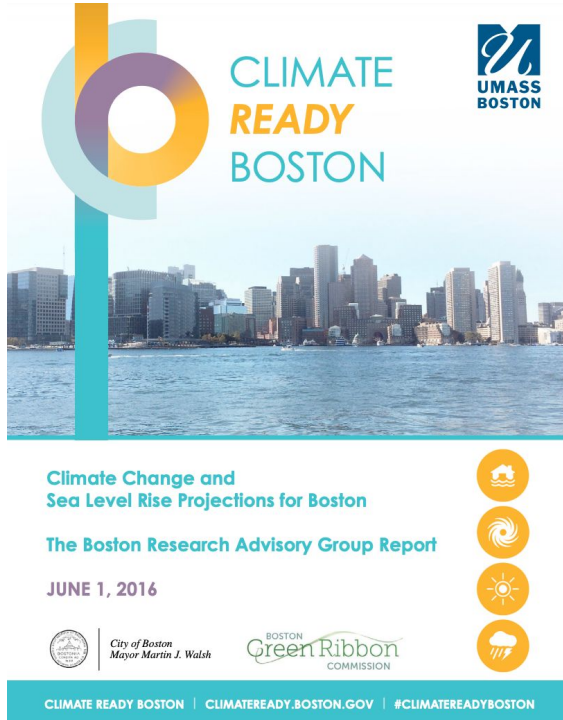
GRCx

July 22nd, 2022

UMass
Boston



BRAG and GBRAG Reports



Report Team

Project Leadership

Ellen Douglas, School for the Environment, UMass Boston; Ellen.Douglas@umb.edu

Paul Kirshen, School for the Environment, UMass Boston; Paul.Kirshen@umb.edu

Project Administrator

Kimberly Starbuck, Urban Harbors Institute, UMass Boston

Stakeholder Engagement and Outreach Team

Kristin Uiterwyk, Urban Harbors Institute, UMass Boston, Team Leader

Kimberly Starbuck, Urban Harbors Institute, UMass Boston

Paul Kirshen, School for the Environment, UMass Boston

Betsy Sweet, Urban Planning and Community Development, UMass Boston

Anna Valdez, School for the Environment, UMass Boston

Darci Schofield, Metropolitan Area Planning Council

Temperature Team

Evan Kodra, *risQ Inc.*, Team Leader

Kate Duffy, NASA Ames Research Center

Ryan Grieser, *risQ Inc.*

Ambarish Karmalkar, Department of Geosciences, UMass Amherst

Terry Tabors, *risQ Inc.*

Mary Warner, Northeastern University

Storms, Precipitation, Flooding, and Groundwater Team

Mathew Barlow, UMass Lowell, Team Leader

Laurie Agel, UMass Lowell

Mathias Collins, National Oceanic and Atmospheric Administration

Art DeGaetano, Cornell University

Jayne Knott, JFK Environmental Services LLC

Ambarish Karmalkar, UMass Amherst

Sea Level Rise Team

Robert DeConto, UMass Amherst, Team Leader

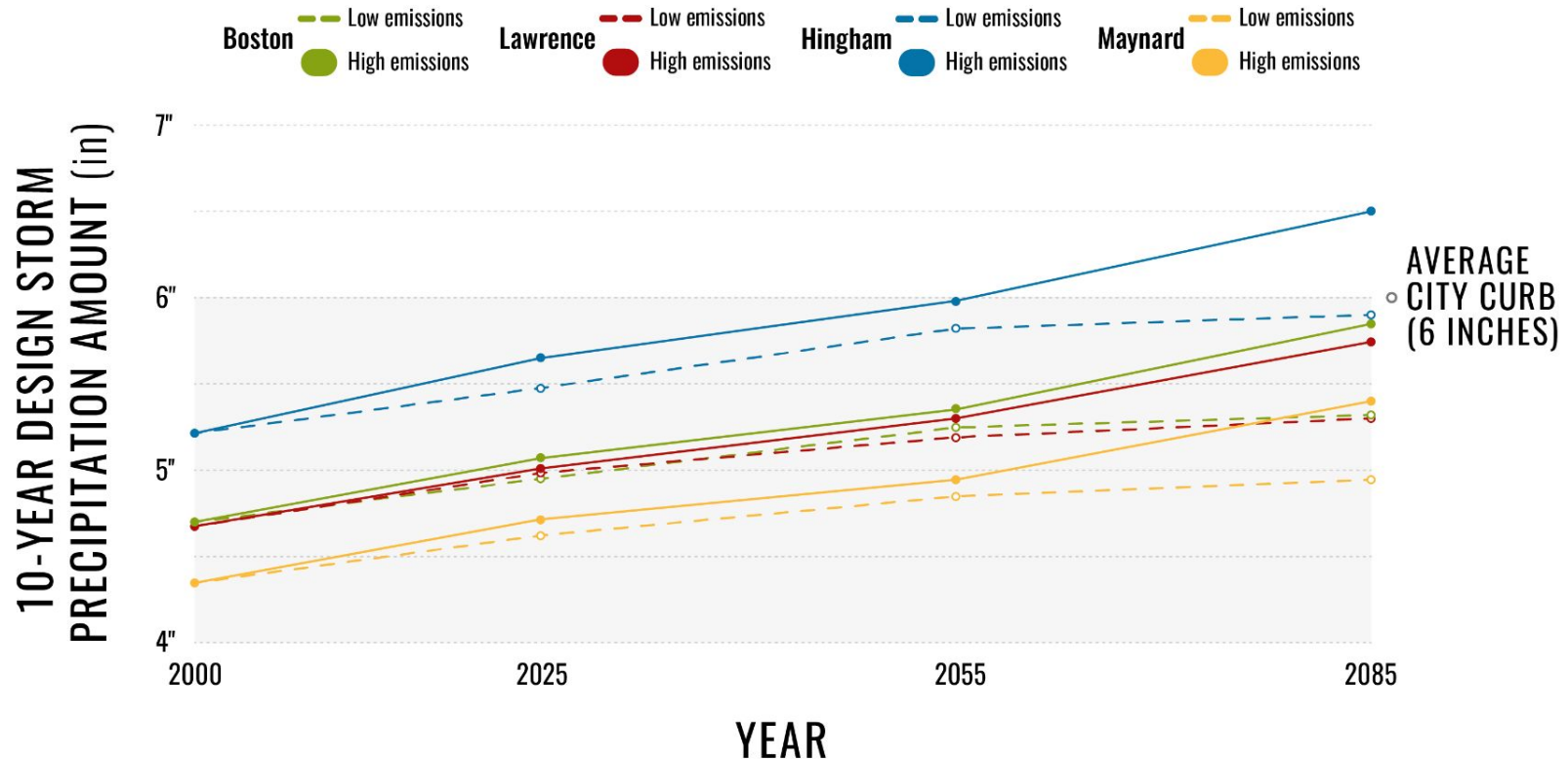
Hannah Baranes, UMass Amherst

Jon Woodruff, UMass Amherst

Anna Ruth Halberstadt, UMass Amherst

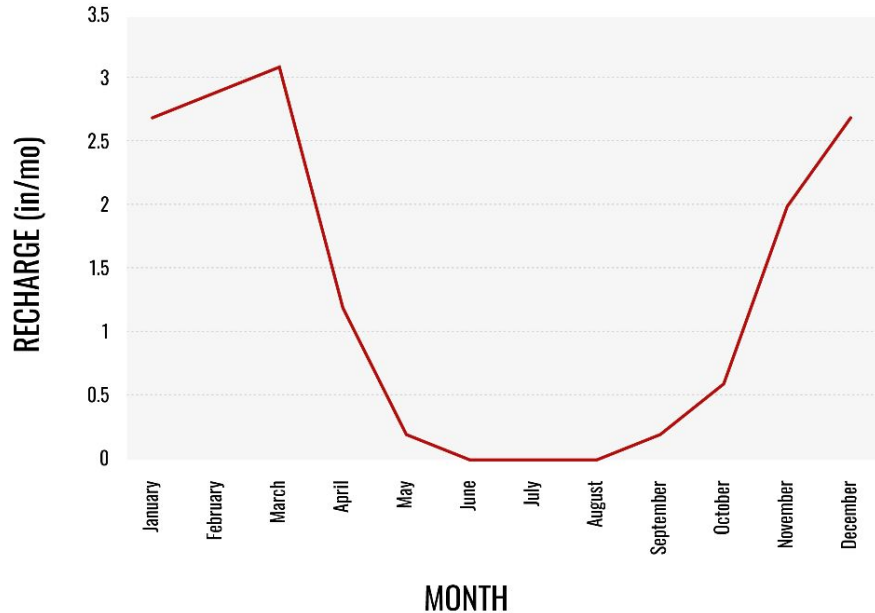
Robert Kopp, Rutgers University

PROJECTED INCREASES IN PRECIPITATION

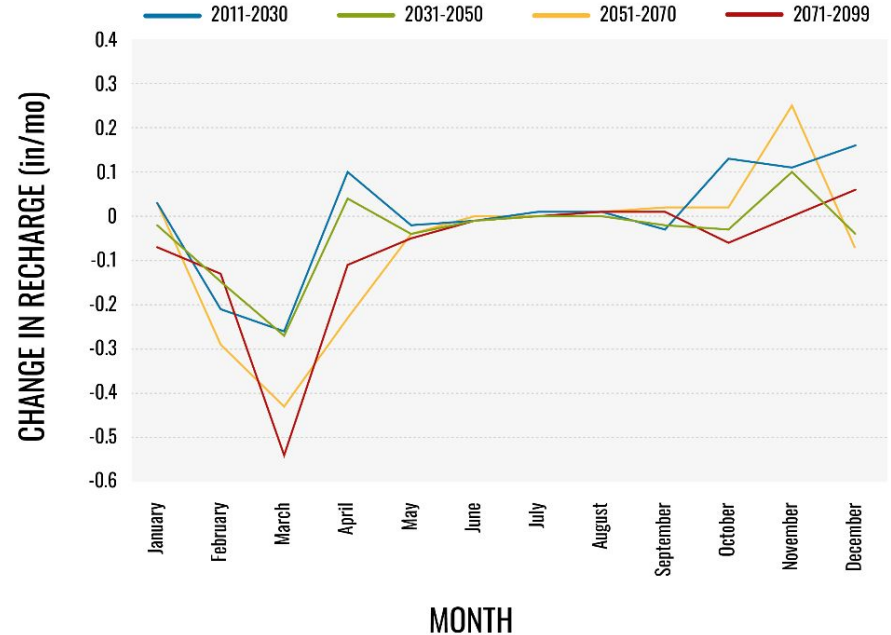


PROJECTED CHANGES TO GROUNDWATER RECHARGE

Monthly Groundwater Recharge Rate
for Pepperell, MA (Present)

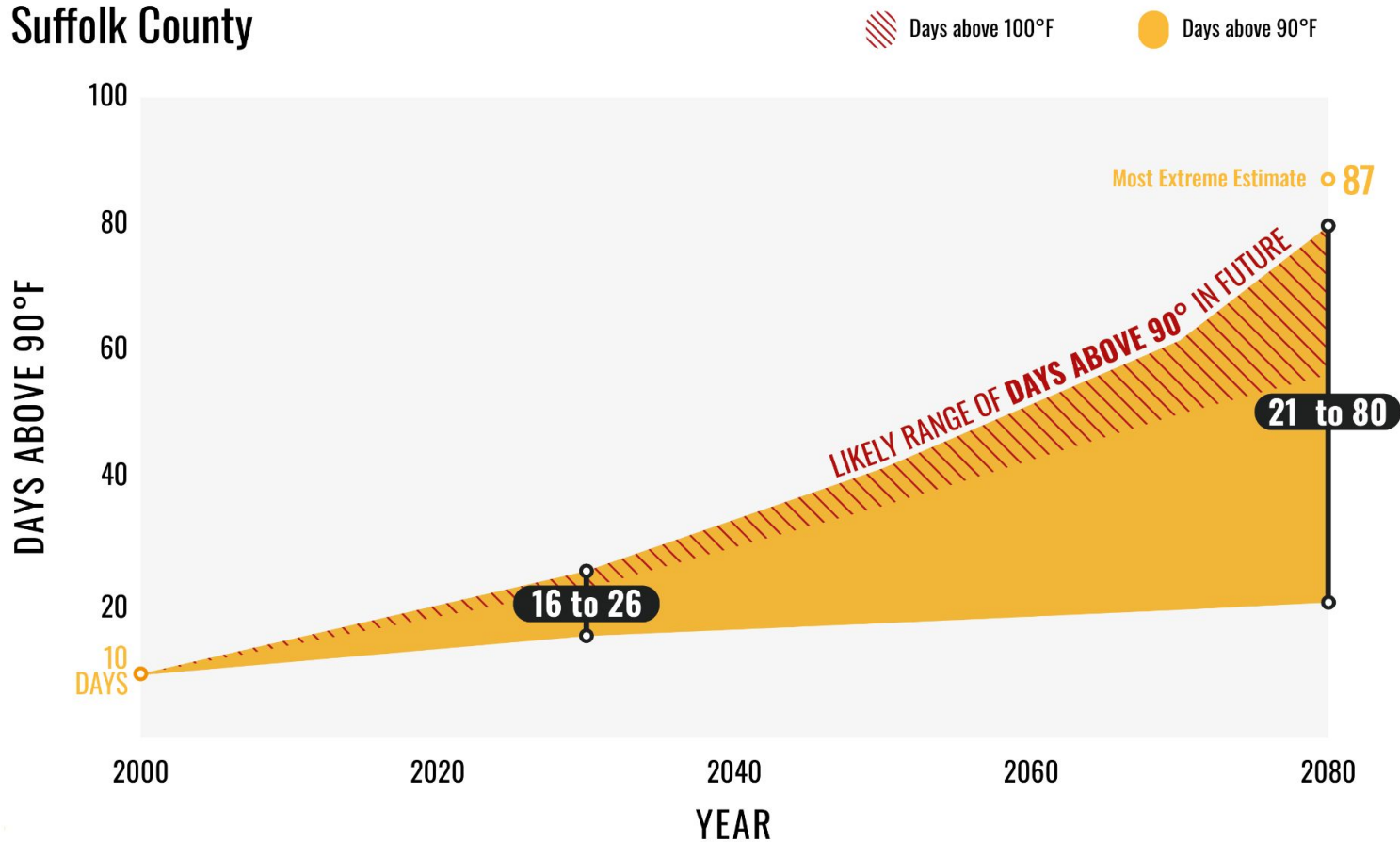


Projected Changes in Monthly Groundwater Recharge
for Pepperell, MA



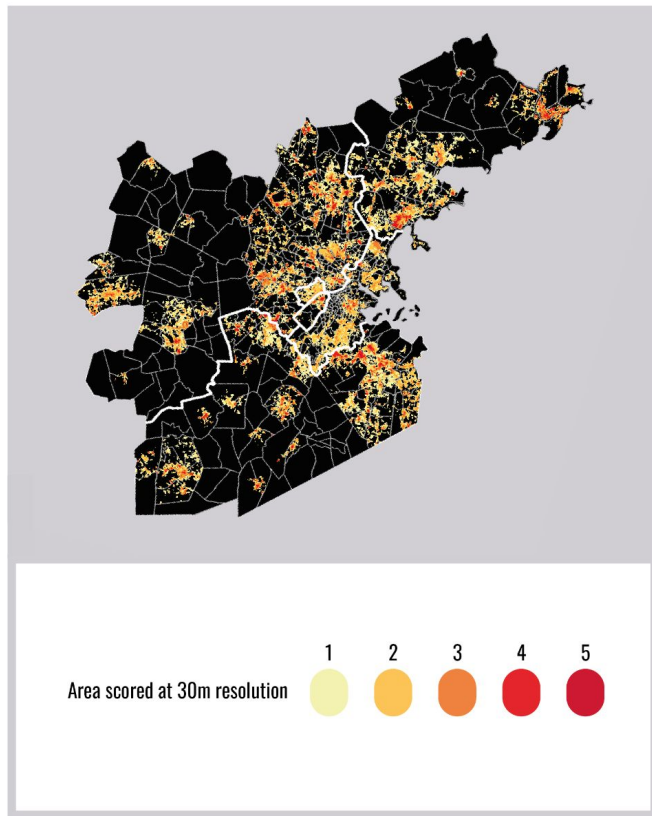
PROJECTED CHANGES IN EXTREME TEMPERATURE DAYS ACROSS MASSACHUSETTS

Suffolk County

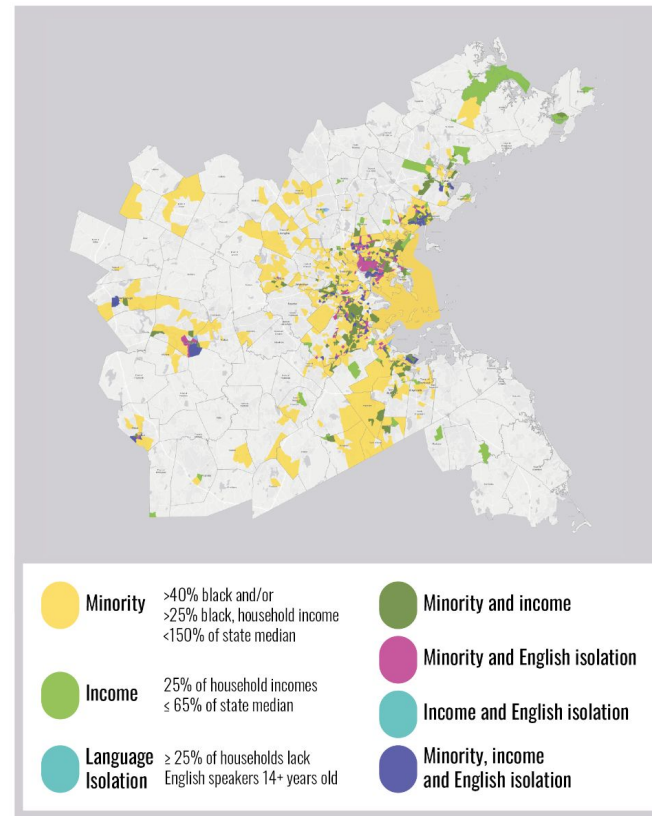


DISPROPORTIONATE IMPACT OF EXTREME HEAT ON VULNERABLE POPULATIONS

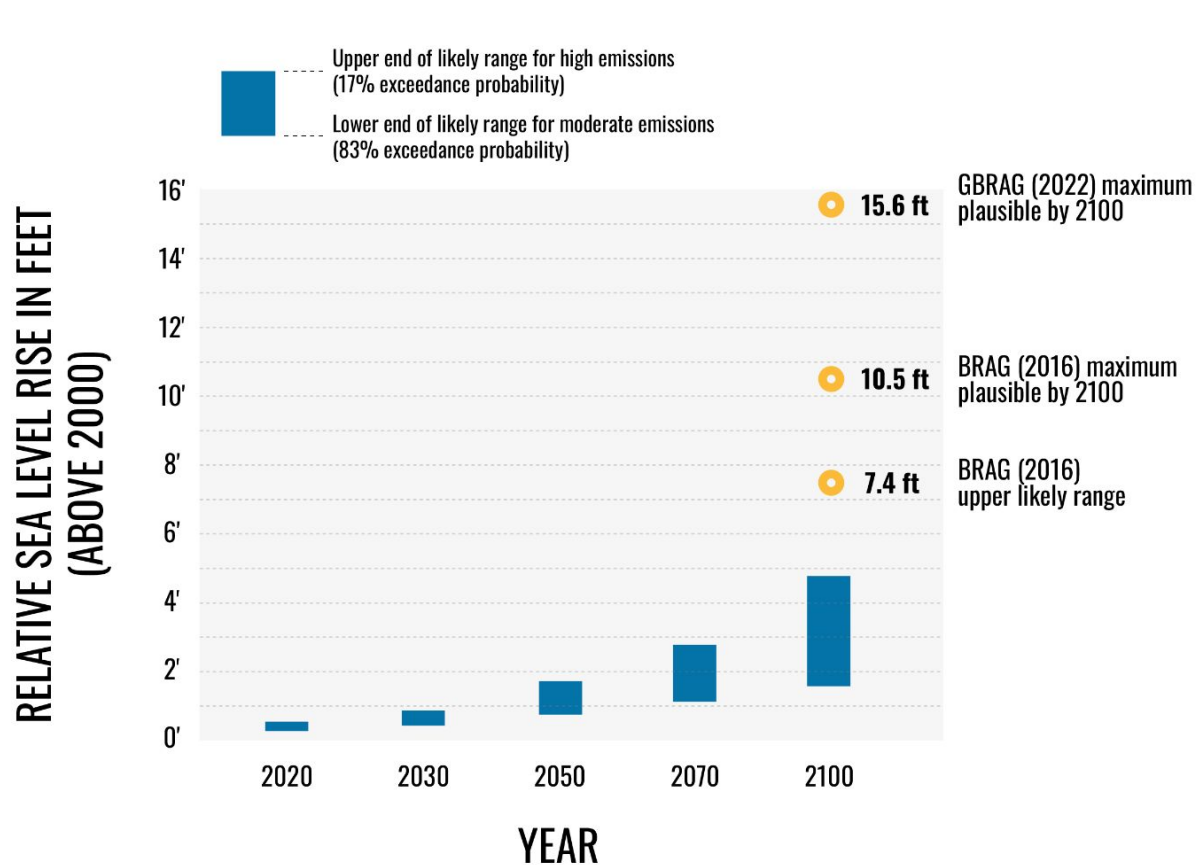
URBAN HEAT ISLANDS
IN THE MAPC REGION (2020)



ENVIRONMENTAL JUSTICE COMMUNITIES
IN THE MAPC REGION (2020)



LIKELY RANGE OF PROJECTED SEA LEVEL RISE FOR BOSTON AREA



THANK YOU!

UMass
Boston



TM



Thank you!

GRCx

